



GeoMedia Transaction Manager

Updating the map database in some industry segments, such as land information management, public works management, transportation management, and hydrographic and aeronautical charting, takes hours, days, or sometimes months. GeoMedia® Transaction Manager introduces the functionality for long term transaction (LTT) management, versioning, and temporal data management for the GeoMedia Professional and Oracle9i™ environment. Now, organizations and individuals can manage the life cycle of data changes while they maintain the validity of important enterprise geospatial information.

Safeguard the integrity of valuable data

Conventional database management systems handle transactions of short duration satisfactorily, but traditional techniques for concurrency control and locking have been insufficient for applications requiring long term transaction management. GeoMedia Transaction Manager is designed for organizations that have multiple users within a department or across departments who simultaneously build and maintain geospatial data models. It provides robust long term transaction data management throughout the life of a project or asset in a secure multi-user environment.

Leverage the power of two robust technologies

Leveraging the capabilities of GeoMedia technology and Oracle's Workspace Manager (OWM), GeoMedia Transaction Manager provides techniques for efficiently managing long term transactions. The Oracle database manages the transactions, which means non-GIS applications can access and review data without going through a proprietary GIS application. The GeoMedia architecture provides an open and flexible environment for workflow and command customization.

Managing change

For enterprises using geospatial information, the history of changed data is a valuable resource. With GeoMedia Transaction Manager, data is edited in a controlled environment through long term

transactions. Changed data is versioned and persisted in the database as an amendment, creating a database time continuum. Now, an organization can retain a sense of geographic evolution that paper map repositories provide only in the form of written annotation, hardcopy change reports, and overprints.

Just-in-time locking

This unique capability locks records at the time of the edit instead of requiring a pre-extract processing step. As a result, geospatial features are not artificially locked just because of their proximity to a project area. So multiple users can work on projects in the same geographic area, which maximizes communication, minimizes project conflicts, and saves time and money.

Collaborating on projects

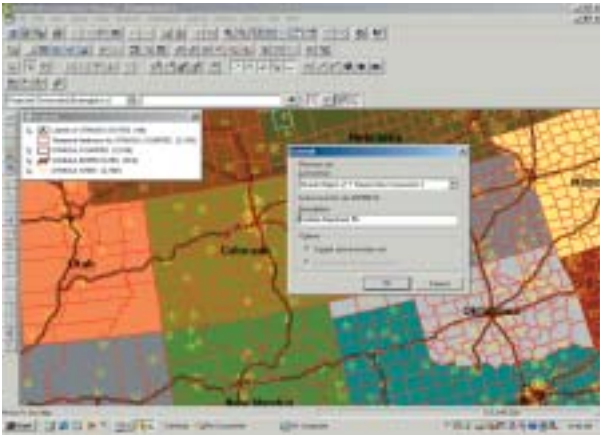
On collaborative projects involving people in multiple departments or agencies, project team members can see the changes others have made during design and editing sessions. Staff from different departments can work on various components of the project data without interfering with each other. And everyone can view the changes before they are committed to the data model.

Temporal data capture, query, and visualization

GeoMedia Transaction Manager's temporal query and visualization capabilities enable people to examine changes and their possible causes and effects in a way not previously possible. Queries show how a specific feature changed on a given date or display a snapshot of a specific area as it appeared at a previous time. Using GeoMedia's analysis capabilities, you can spatially compare data from two different times.

Bridge the gap between technology and productivity

Providing a comprehensive set of services for the open computing environment, Intergraph Mapping and Geospatial Solutions helps you get the most from your investment. Intergraph's experienced staff and consultants deliver professional services that include system integration, consulting, project services, and implementation.



Using GeoMedia Transaction Manager, you can manage the life cycle of data changes while safeguarding the integrity and validity of your valuable enterprise geospatial information.

GeoMedia: Open from the start

As a founding and strategic member of the Open GIS Consortium (OGC™), Intergraph is a visible force in ongoing OGC initiatives for industry standards, and spearheads interoperability in the GIS and IT marketplace. Intergraph Mapping and Geospatial Solutions is committed to open systems solutions and data interoperability.

The Intergraph Solution

With 35 years of technology innovation to its credit, Intergraph understands the business challenges customers face every day. Our unique combination of pioneering technology and comprehensive professional services makes Intergraph Mapping and Geospatial Solutions the leading provider of customized geospatial solutions for local, regional, and national government entities; transportation and mapping agencies; utilities and communications companies; commercial remote sensing and photogrammetry organizations; military and intelligence agencies; educational institutions; and more.



GeoMedia Transaction Manager provides the functionality for long term transaction management, versioning, and temporal data management. Multiple users can simultaneously build and maintain geospatial data models without making conflicting edits.

For more information, visit our Web site at <http://imgis.intergraph.com>.

United States	1-800-791-3357
Canada	1-800-661-8134
Europe	31-23-5666333
Asia Pacific	61-7-3510-8900
Other areas	1-256-730-7191



Intergraph, the Intergraph logo and GeoMedia are registered trademarks of Intergraph Corporation. Oracle9i is a trademark of Oracle Corporation. Other brands and product names are trademarks of their respective owners. ©2004 Intergraph Corporation, Huntsville, AL 35824. 6/04
IMG5004F0

