



GeoMedia Parcel Manager

GeoMedia® Parcel Manager delivers configurable and customizable functionality to land management agencies around the world. Every day, as property is bought and sold, mineral rights are leased, land values change, and areas are rezoned, these organizations use GeoMedia Parcel Manager to provide accurate, up-to-date information – both within the enterprise and to the general public.

Implement modern land management

With commands and workflows specifically tailored for cadastral and property mapping industries, GeoMedia Parcel Manager enables professionals to collect and maintain parcel boundary and related land information in a nonproprietary database environment. It is designed for surveyors, tax mappers, assessment officers, data capture and conversion contractors, cities and utilities, national cadastral agencies, military organizations, and others who need to create and maintain land information.

Discover the right tools for the job

In addition to land information system (LIS)-specific APIs and functionality, GeoMedia Parcel Manager provides the following capabilities:

Proportioning geometry

Information in LIS databases often differs from the actual survey plans. Proportioning capabilities make it easy to reconcile the accurate survey plan with the less accurate existing geospatial data.

Coordinate geometry (COGO)

A database-centric COGO capability transforms subdivision plans and metes and bounds descriptions into GIS features. Surveys, traverses, and boundary data entered into the system are persisted in the COGO database and are available for online review, reporting, and analysis.

Data integration

The software can retrieve data from virtually any Geographic Data Objects (GDO)-compliant data server, including Oracle®,

Microsoft® Access, Microsoft SQL Server, MGE, ArcInfo, and ArcView. Data from disparate databases can be integrated into a single environment – no translation required.

Parcel numbering and labeling

The software supports the most common numbering systems and provides the tools to efficiently label and annotate parcel maps.

Property merge and split

Auto-validate, analyze, and apply changes – splits, merges, deletes, and inserts – to the parcel boundary fabric. Perform appropriate data-management tasks, such as retiring a parcel or assigning new ownership. When this capability is used in conjunction with GeoMedia Transaction Manager, organizations can retain the complete history of all land information edits.

Survey data integration and parcel fabric adjustment

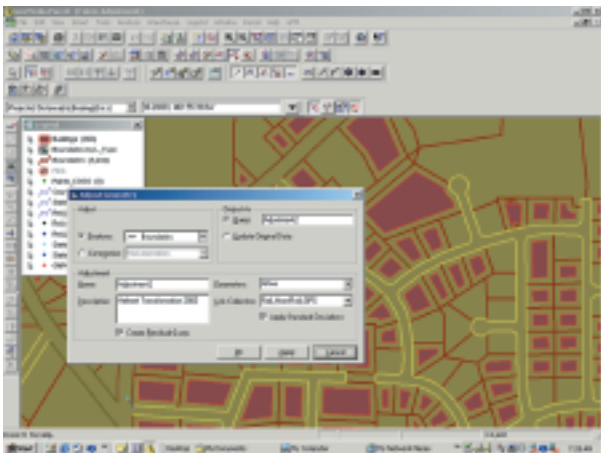
Rich functionality and workflows incorporate new survey information and adjust both existing and new information. Database-centric adjustment definition and management allow storage of adjustment parameters in any supported database.

Plat/map book generation Batch processing capabilities make map production easy. The staff can efficiently annotate parcel maps, as well as manage and produce map books.

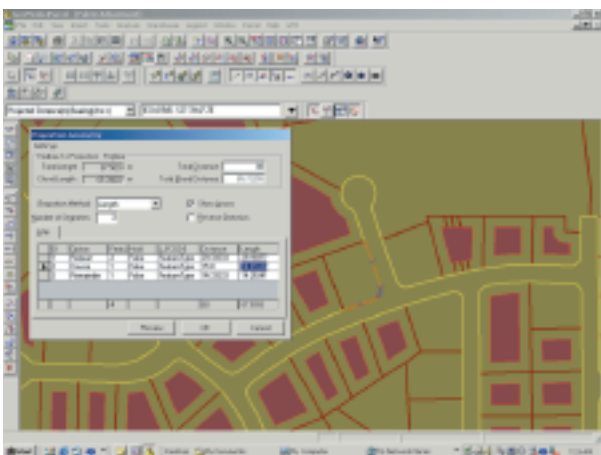
Take advantage of the power of GeoMedia technology

Built on GeoMedia Professional, GeoMedia Parcel Manager employs powerful tools that work to your advantage, allowing you to:

- Use intelligent capture and editing tools
- Add intelligence to features by integrating graphics with attribute data
- Combine the power of GeoMedia's spatial technology with a robust CAD-like drafting environment
- Scale a solution that best fits the size and resources of your enterprise



GeoMedia Parcel Manager's robust geometry adjustment environment is ideal for integrating new data into your parcel fabric or incrementally improving the accuracy of your land base.



Proportioning capabilities make it easy to reconcile an accurate survey plan with less accurate existing geospatial data.

Bridge the gap between technology and productivity

Providing a comprehensive set of services for the open computing environment, Intergraph Mapping and Geospatial Solutions helps you get the most from your investment. Intergraph's experienced staff and consultants deliver professional services that include system integration, consulting, project services, and implementation.

GeoMedia: Open from the start

As a founding and strategic member of the Open GIS Consortium (OGC™), Intergraph is a visible force in ongoing OGC initiatives for industry standards, and spearheads interoperability in the GIS and IT marketplace. Intergraph Mapping and Geospatial Solutions is committed to open systems solutions and data interoperability.

The Intergraph Solution

With 35 years of technology innovation to its credit, Intergraph understands the business challenges customers face every day. Our unique combination of pioneering technology and comprehensive professional services makes Intergraph Mapping and Geospatial Solutions the leading provider of customized geospatial solutions for local, regional, and national government entities; transportation and mapping agencies; utilities and communications companies; commercial remote sensing and photogrammetry organizations; military and intelligence agencies; educational institutions; and more.

For more information, visit our Web site at <http://imgs.intergraph.com>.

United States	1-800-791-3357
Canada	1-800-661-8134
Europe	31-23-5666333
Asia Pacific	61-7-3510-8900
Other areas	1-256-730-7191



Intergraph, the Intergraph logo, and GeoMedia are registered trademarks of Intergraph Corporation. Microsoft and Microsoft Windows are registered trademarks of Microsoft Corporation. Oracle is a trademark of Oracle Corporation. Other brands and product names are trademarks of their respective owners. ©2004 Intergraph Corporation, Huntsville, AL 35824. 6/04
IMGS003FO

